

# Asia's Leading Electronics Technology Exhibition



Exhibition for following technologies

SMT

Components

PCB

Testing

IC & Sensor Packaging

Fine Process Technology

Power Device & Module

### Tokyo Show -January-

Dates:  
Jan. 21(Wed) – 23(Fri), 2026

Venue:  
Tokyo Big Sight, Japan

### Osaka Show

Dates:  
May 13(Wed) – 15(Fri), 2026

Venue:  
INTEX Osaka, Japan

### Tokyo Show -September-

Dates:  
Sep. 9(Wed) – 11(Fri), 2026

Venue:  
Makuhari Messe, Japan

### Nagoya Show

Dates:  
Nov. 25(Wed) – 27(Fri), 2026

Venue:  
AICHI SKY EXPO, Japan

Organised by: RX Japan Ltd.

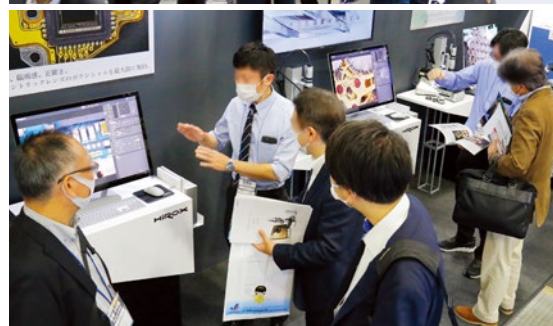
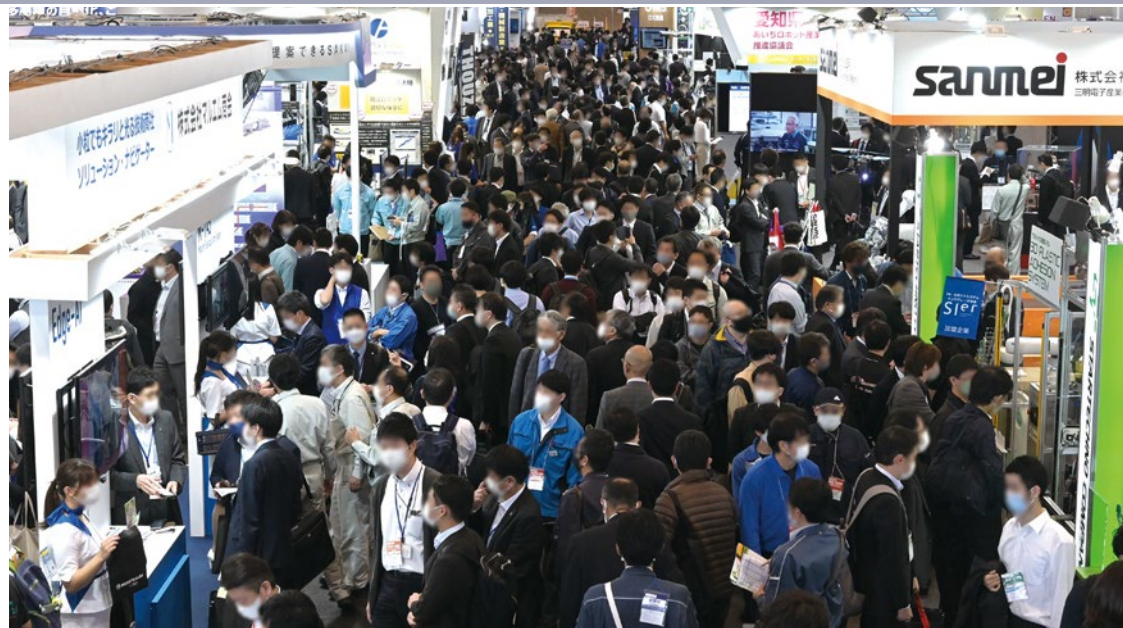
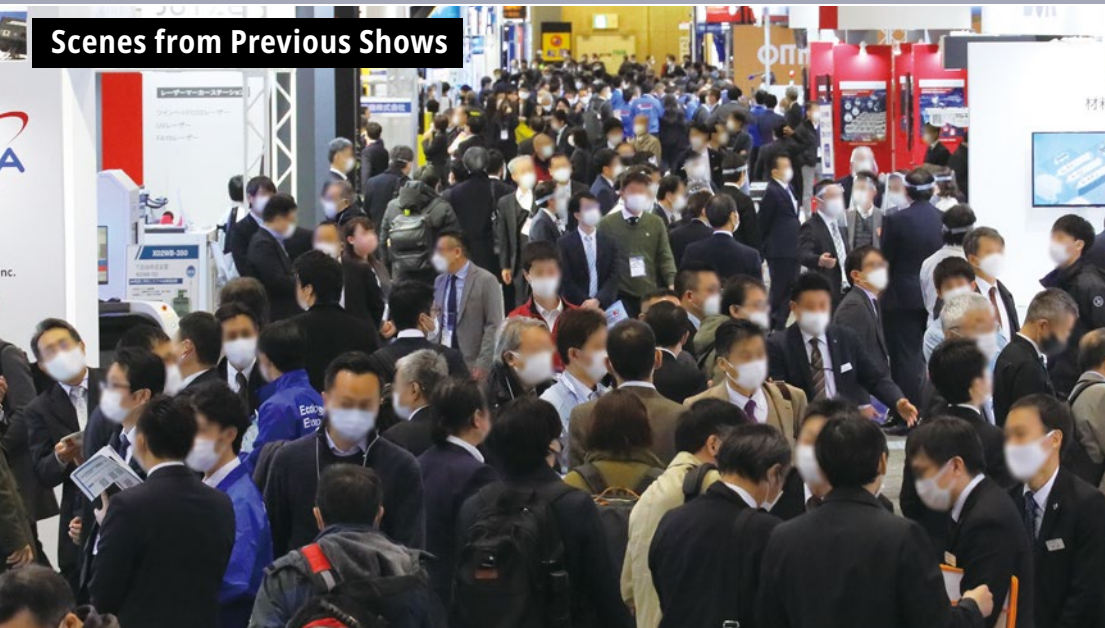
# INDEX

▶ Click below and jump to the page

▶ <u>Scenes from Previous Shows</u> .....	P3
▶ <u>Show Outline</u> .....	P4
▶ <u>Exhibit Profile</u> .....	P5
▶ <u>About Exhibitors</u> .....	P6
▶ <u>About Visitors</u> .....	P7
▶ <u>Concurrent Conference</u> .....	P8
▶ <u>Details for Tokyo Shows – September &amp; January –</u> .....	P9
▶ <u>Details for Nagoya Show</u> .....	P10
▶ <u>Details for Osaka Show</u> .....	P11
▶ <u>Schedule until the Show</u> .....	P12
▶ <u>How to Join as an Exhibitor</u> .....	P13

# Asia's Leading Electronics Technology Exhibition

Scenes from Previous Shows



# B2B Exhibition for R&D and Manufacturing Technologies

## Exhibitors

Manufacturers and trading companies of the following fields:

- SMT
  - Testing Technologies
  - Technologies for IC & Sensor Packaging
  - Electronic Components/ Materials
  - Printed Circuit Boards
  - Fine Process Technologies
  - Power Device & Module Technologies
- etc.

## Business Meetings

- ◆ New Product/ Technology Introduction
- ◆ Technical Consultation
- ◆ New Partnership Arrangement
- ◆ Price/Delivery Date Arrangement



## Visitors

Engineers of the following manufacturers:

- Electronic Devices
  - Semiconductors/ Electronic Components
  - Automobiles, Automotive Components
  - Medical Equipment
  - Robots, FA Equipment
- 
- New Entrants to Electronic Industry
- etc.

# The Show Consists of 7 Specialised Fairs

## <Exhibit Profile>

### SMT

- Mounters
- Taping
- Printing Machines/Masks
- Clean/ESD Protection
- Soldering Machines

etc.



### Testing Technology

- Vision Inspection
- Measurements, Inspections, Analysis
- Non Destructive Inspection Equipment
- Testers

etc.



### Packaging Technology

- Materials
- Components
- Semiconductor Device Inspection Equipment
- Assembly/Testing Equipment
- Plating/Etching Materials

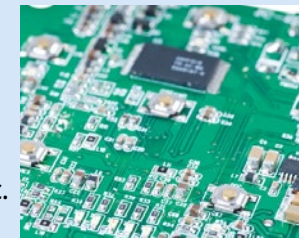
etc.



### PCBs

- Rigid PCBs
- Multi-layered PCBs
- Semiconductor Packaging PCBs
- Flexible PCBs
- Optical PCBs

etc.



### Electronic Components & Materials

- Terminal Blocks
- Sensors
- Materials for Mounted Circuit
- Connectors & Cables
- Switches, Registers

etc.



### Fine Process Technology

- Press Work
- Drilling
- Metal Molding Electroforming
- Fine Casting
- Laser Processing

etc.



### Power Device & Module

- Power Devices
- Power Modules
- Semiconductor Materials & Components
- Analysis Technologies
- Manufacturing & Testing Technologies
- EMC
- Heat Prevention (Heat Release & Cooling)
- Control/Drive/Sensing

etc.



# Leading Companies Exhibit Every Year

## <List of exhibitors in previous shows (excerpted)>

- AGC
- AJINOMOTO FINE-TECHNO
- ALMIT
- ALPS ALPINE
- AMADA MIYACHI
- ANALOG DEVICES
- ASE GROUP
- AT&S JAPAN
- BOSCH
- BROTHER INDUSTRIES
- CANON MACHINERY
- CARL ZEISS
- CKD
- CMK
- DAIICHI JITSUGYO
- DELTA ELECTRONICS (JAPAN)
- DENKA
- DUPONT
- EVERLIGHT ELECTRONICS
- FUJI
- FUJIPRINT
- FUJITSU ADVANCED TECHNOLOGIES

- FUJITSU INTERCONNECT TECHNOLOGIES
- HAKKO
- HAMAMATSU PHOTONICS
- HESSE MECHATRONICS JAPAN
- HITACHI HIGH-TECHNOLOGIES
- INFINEON TECHNOLOGIES JAPAN
- JAPAN AUTOMATIC MACHINE
- JAPAN UNIX
- JUTZE JAPAN
- KCE ELECTRONICS
- KEYENCE
- KODENSHI
- KOH YOUNG JAPAN
- KOKI
- KOMAX JAPAN
- KULICKE AND SOFFA (JAPAN)
- LAPIS SEMICONDUCTOR
- LPKF LASER & ELECTRONICS
- MEIKO ELECTRONICS
- MICRO-TEC
- MIRTEC JAPAN

- MITSUBISHI MATERIALS
- MURATA MANUFACTURING
- MYCRONIC TECHNOLOGIES
- NAGASE
- NAGOYA ELECTRIC WORKS
- NEWLONG SEIMITSU KOGYO
- NGK SPARK PLUG
- NIDEC
- NIPPON AVIONICS
- NIPPON CHEMI-CON
- NIPPON MEKTRON
- NORDSON ADVANCED TECHNOLOGY
- OKI ELECTRIC INDUSTRY
- OKI PRINTED CIRCUITS
- OLYMPUS
- OMRON
- ON SEMICONDUCTOR
- PANASONIC
- PARMi JAPAN
- REXXAM
- ROHM

- ROHM AND HAAS ELECTRONIC MATERIALS
- SAKI CORPORATION
- SCHLEUNIGER JAPAN
- SCREEN SEMICONDUCTOR SOLUTIONS
- SEKISUIPLASTICS
- SHIBUYA
- SHIMADZU
- SHIN-ETSU CHEMICAL
- SHINMAYWA INDUSTRIES
- SHOWA DENKO
- SONY SEMICONDUCTOR SOLUTIONS
- STANLEY ELECTRIC
- STMICROELECTRONICS
- TAIYO INK MFG.
- TAIYO YUDEN
- TAMURA
- TDK
- TEIJIN
- TEST RESEARCH (TRI)
- TOKYO ELECTRON DEVICE

- TOKYO WELD
- TORAY
- TOSHIBA ELECTRONIC DEVICES & STORAGE
- TRUMPF
- UBE INFORMATION SYSTEMS
- UENO SEIKI
- ULTRASONIC ENGINEERING
- USHIO
- WESTERN DIGITAL JAPAN
- XILINX
- YAC GARTER
- YAMAHA MOTOR
- YAMATO SCIENTIFIC

etc.

See here for full list of exhibitors in 2025 Tokyo Show -January-



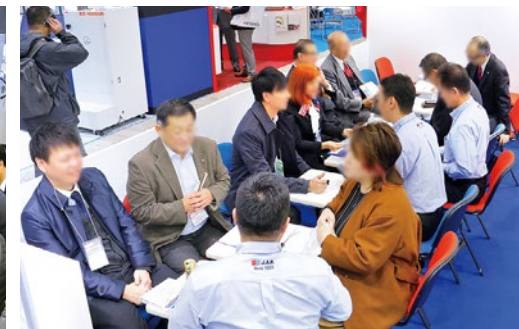
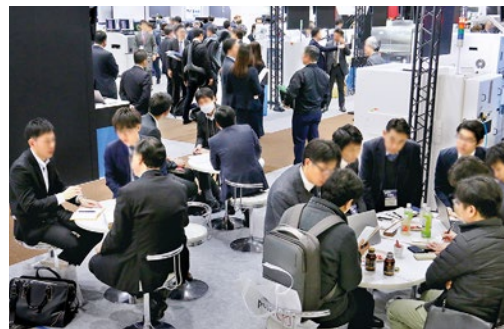
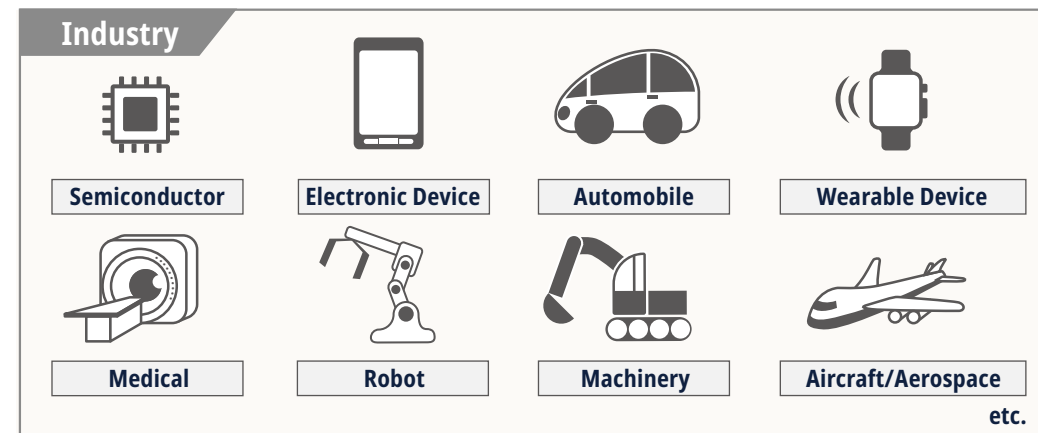
# High Quality Visitors Attend

## <List of visitors in previous shows (excerpted)>

- |   |  |  |
|---|--|--|
| <ul style="list-style-type: none"> <li>• AISIN</li> <li>• ALPS ALPINE</li> <li>• AMAZON</li> <li>• AMD</li> <li>• AMKOR TECHNOLOGY</li> <li>• APPLE</li> <li>• ASE</li> <li>• ASUSTEK COMPUTER</li> <li>• AUDI</li> <li>• BMW</li> <li>• BOE</li> <li>• BOSCH</li> <li>• BYD</li> <li>• CANON</li> <li>• CLARION</li> <li>• COMPAL ELECTRONICS</li> <li>• CONTINENTAL AUTOMOTIVE</li> <li>• DAIMLER</li> <li>• DELTA ELECTRONICS</li> <li>• DENSO</li> <li>• DENSO TEN</li> <li>• EPISTER</li> <li>• EVERLIGHT</li> <li>• FAIRCHILD SEMICONDUCTOR</li> <li>• FANUC</li> <li>• FORD MOTOR</li> <li>• FOXCONN</li> <li>• FUJI FILM</li> <li>• FUJITSU</li> <li>• GE</li> <li>• GENERAL MOTORS</li> <li>• GOOGLE</li> <li>• HAIER</li> <li>• HISENSE</li> <li>• HITACHI</li> <li>• HITACHI AUTOMOTIVE SYSTEMS</li> </ul> | <ul style="list-style-type: none"> <li>• HONDA R&amp;D</li> <li>• HUAWEI TECHNOLOGIES</li> <li>• HYUNDAI</li> <li>• INFINEON TECHNOLOGIES JAPAN</li> <li>• INTEL</li> <li>• JDI</li> <li>• KAWASAKI HEAVY INDUSTRIES</li> <li>• KEIHIN</li> <li>• KOITO MFG.</li> <li>• KONICA MINOLTA</li> <li>• KONKA</li> <li>• KYOCERA</li> <li>• LENOVO</li> <li>• LG DISPLAY</li> <li>• LG ELECTRONICS</li> <li>• MAZDA MOTOR</li> <li>• MEDIATEK</li> <li>• MEGACHIPS</li> <li>• MIDEA GROUP</li> <li>• MITSUBISHI ELECTRIC</li> <li>• MURATA MFG.</li> <li>• NEC</li> <li>• NICHIA</li> <li>• NIHON KOHDEN</li> <li>• NISSAN MOTOR</li> <li>• NVIDIA</li> <li>• OLYMPUS</li> <li>• OMRON</li> <li>• PANASONIC</li> <li>• PEGATRON</li> <li>• PIONEER</li> <li>• PLEXUS</li> <li>• QUALCOMM</li> <li>• QUANTA COMPUTER</li> <li>• RENAULT</li> <li>• RENESAS ELECTRONICS</li> </ul> | <ul style="list-style-type: none"> <li>• ROHM</li> <li>• SAMSUNG DISPLAY</li> <li>• SAMSUNG ELECTRONICS</li> <li>• SEIKO EPSON</li> <li>• SHARP</li> <li>• SHENZHEN CHINA STAR OPTOELECTRONICS TECHNOLOGY</li> <li>• SIEMENS</li> <li>• SK HYNIX</li> <li>• SMIC</li> <li>• SONY</li> <li>• SPIL</li> <li>• STANLEY ELECTRIC</li> <li>• STMICROELECTRONICS</li> <li>• SUZUKI MOTOR</li> <li>• SYSMEX</li> <li>• TAIYO YUDEN</li> <li>• TCL</li> <li>• TDK</li> <li>• TERUMO</li> <li>• TOKAI RIKAI</li> <li>• TOSHIBA</li> <li>• TOYOTA MOTOR</li> <li>• TSMC</li> <li>• VOLKSWAGEN</li> <li>• VOLVO</li> <li>• YAMAHA MOTOR</li> <li>• YASKAWA</li> </ul> |
|---|--|--|

etc.

## <Visitor profile>



# Industry Leaders Speak at Conference

## Sessions by industry leaders attract huge attention to visitors

### <List of speakers in previous shows (excerpts)>



Norio Nakajima  
President,  
**Murata Manufacturing Co., Ltd.**



Atsuo Takemoto  
Executive Officer, Manufacturing  
and Procurement Headquarters  
**Konica Minolta, Inc.**



Udo Welzel  
Senior Expert, Automotive  
Electronics – Engineering  
Technology Integration,  
**Robert Bosch GmbH**



Takeshi Inoue  
Energy & Industry Group,  
Power Device Application Dept.,  
Application Engineer Div.,  
**ROHM Co., Ltd.**



Takehiro Nakamura  
Senior Vice President,  
General Manager of 6G Labs.,  
**NTT DOCOMO, Inc.**



Atsuto Shimada  
Group General Manager,  
Manufacturing Process Solution  
Dept., Process Automation  
Business Div., Connected  
Solutions Company,  
**Panasonic Corp.**



Daniel Isaacs  
Director, Automotive,  
**Xilinx, Inc.**



Rajneesh Kumar  
Principal Engineer & Manager,  
SIP & Module Packaging Tech.,  
**Qualcomm Inc.**



Arihiro Kamiya  
Semiconductor Strategy Planning  
Dept., Electronics Platform Hardware  
R&D Div.,  
**DENSO Corp.**



Lee Jeongho  
Products Development Team,  
Project Leader,  
(Principle Engineer),  
**Samsung Electronics Co., Ltd.**



Terushi Shimizu  
Senior Executive Vice President,  
**Sony Corp. /**  
Representative Director,  
President and CEO,  
**Sony Semiconductor Solutions Corp.**



Thorsten Meyer  
Lead Principal, Package Concept  
Engineering,  
**Infineon Technologies AG**

### Hot Topics Covered in the Previous Conferences

- Innovation to Realise 5G
- Future Shaped by IoT/Sensors
- Electronics Manufacturers' Smart Factory Strategies
- Moving towards 6G
- AI in Material Development

etc.



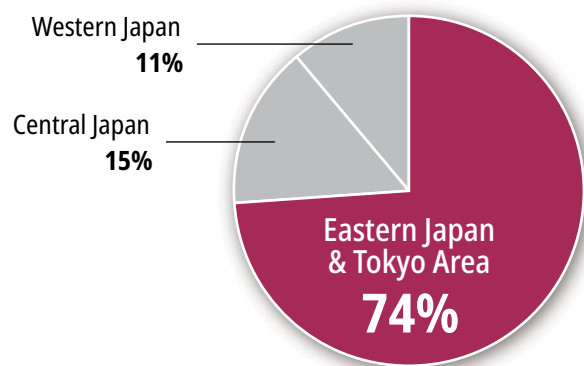
Honorifics omitted. In random order. Speakers' affiliations and positions are those at the time of the conference. Affiliations and positions may be omitted due to the space limit.

# Tokyo Edition Held Twice a Year

## ◆ Meet Visitors from Tokyo & Eastern Japan!

Visitor Breakdown by Region

(Figures from Japanese Visitors in 2023 Tokyo Show)



### <Companies located in Tokyo & Eastern Japan>

- |                               |                               |                        |                            |
|-------------------------------|-------------------------------|------------------------|----------------------------|
| • NEC                         | • TOYOTA MOTOR (Tokyo Office) | • HITACHI ASTEMO       | • DENSO (Tokyo Office)     |
| • NISSAN MOTOR                | • MAZDA (Tokyo Office)        | • ALPSALPINE           | • NIDEC (Tokyo Office)     |
| • HONDA MOTOR                 | • ISUZU (Tokyo Office)        | • KOITO MANUFACTURING  | • PANASONIC (Tokyo Office) |
| • HONDA R&D                   | • SUZUKI (Tokyo Office)       | • NSK                  |                            |
| • SUBARU                      | • DAIHATSU (Tokyo Office)     | • SONY                 |                            |
| • HINO                        | • NIDEC (Tokyo Office)        | • STANLEY ELECTRIC     |                            |
| • MITSUBISHI FUSO TRUCK & BUS |                               | • AISIN (Tokyo Office) | etc.                       |

## January Tokyo Show

**1,850** Exhibitors & **92,000** Visitors

Dates: **January 21(Wed) – 23(Fri), 2026**

Venue: **Tokyo Big Sight, Japan**

– World's Leading in Size

### Concurrent Shows

18th AUTOMOTIVE WORLD    5th SMART LOGISTICS Expo  
Factory Innovation Week 2026



## September Tokyo Show – More than 90% of visitors only visit Sep. show! (Not to Jan. show)

**380** Exhibitors & **28,000** Visitors

Dates: **September 9(Wed) – 11(Fri), 2026**

Venue: **Makuhari Messe, Japan**

### Concurrent Shows

5th RoboDEX (September)  
5th SMART FACTORY Expo (September)  
2nd Manufacturing Industry's HR

Expo (September)  
4th GREEN FACTORY Expo (September)  
5th AUTOMOTIVE WORLD (September)



Numbers of exhibitors and visitors are forecasts including concurrent shows.

# Join **Nagoya** November Edition!

## ◆ Meet Visitors from Central Japan

Aichi Prefecture has been ranked as No.1 in Manufacturing!

### <Companies located in Central Japan>

- |  |   |                                       |
|--|---|---------------------------------------|
| • TOYOTA (Aichi)                       | • Tokai Rika (Aichi)                    | • Nippon Sharyo (Aichi)               |
| • DENSO (Aichi)                        | • Yazaki (Shizuoka)                     | • Mitsubishi Heavy Industries (Aichi) |
| • Aisin (Aichi)                        | • Aichi Machine Industry (Aichi)        | • Nippon Kayaku (Niigata)             |
| • Brother Industries (Aichi)           | • Fujimi (Aichi)                        | • Kojima Press Industry (Aichi)       |
| • DMG Mori (Aichi)                     | • Mitsubishi Electric (Aichi)           | • Yamada Manufacturing (Nagano)       |
| • NGK Insulators (Aichi)               | • Hitachi Automotive Systems (Shizuoka) | • Oiles (Aichi)                       |
| • Sumitomo Electric Industries (Aichi) |   |                                       |

etc.



**Nagoya**  
(Aichi Prefecture)

Dates: **November 25(Wed) – 27(Fri), 2026**  
Venue: **AICHI SKY EXPO, Japan**

## ◆ 620 Exhibitors & 34,000 Visitors

Experience the SYNERGY! The visitors from other 6 co-held shows will visit your booth!



Numbers of exhibitors and visitors are forecasts including concurrent shows

# Join **Osaka** May Edition!

## ◆ Meet Visitors from Western Japan

Held in Osaka, 2nd largest manufacturing area in Japan!  
Osaka is known for its strong electronics industry.

### <Companies located in Western Japan>

- |                                |                                |                                   |
|--------------------------------|--------------------------------|-----------------------------------|
| • Panasonic (Osaka)            | • Daikin Industries (Osaka)    | • Toshiba (Osaka)                 |
| • Sharp (Osaka)                | • ROHM (Kyoto)                 | • Nichicon (Kyoto)                |
| • Kyocera (Kyoto)              | • Nidec (Kyoto)                | • Sumitomo Wiring Systems (Osaka) |
| • Murata Manufacturing (Kyoto) | • Dainippon Screen (Kyoto)     | • Rinnai Corporation (Osaka)      |
| • Sumitomo Electric (Osaka)    | • Sanyo Electric (Osaka)       | • Kobelco (Kobe Steel) (Hyogo)    |
| • Omron (Kyoto)                | • Fujitsu Ten (Hyogo)          |                                   |
| • Mitsubishi Electric (Hyogo)  | • Shimadzu Corporation (Kyoto) |                                   |



**Dates: May 13(Wed) – 15(Fri), 2026**  
**Venue: INTEX Osaka, Japan**

## ◆ 700 Exhibitors & 42,000 Visitors

Co-held with

**Factory Innovation Week** **OSAKA** **2026**

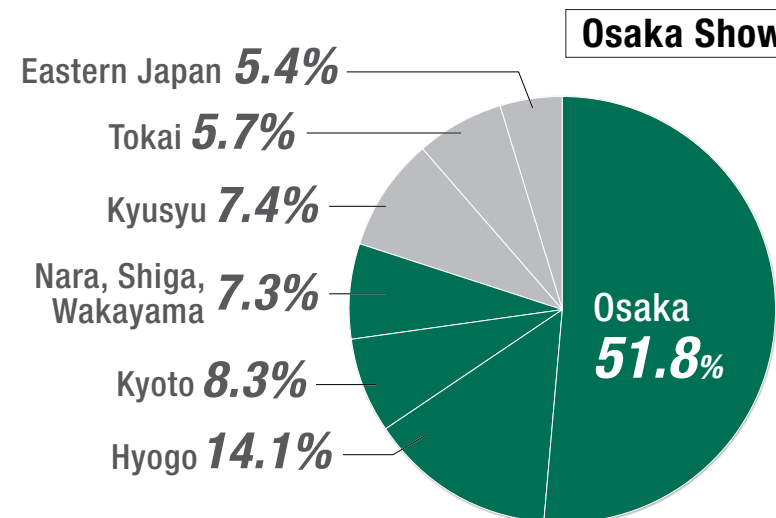


<Visitors>

Engineers/Managements from departments of Production/  
Manufacturing/Factory/Information System.....etc.

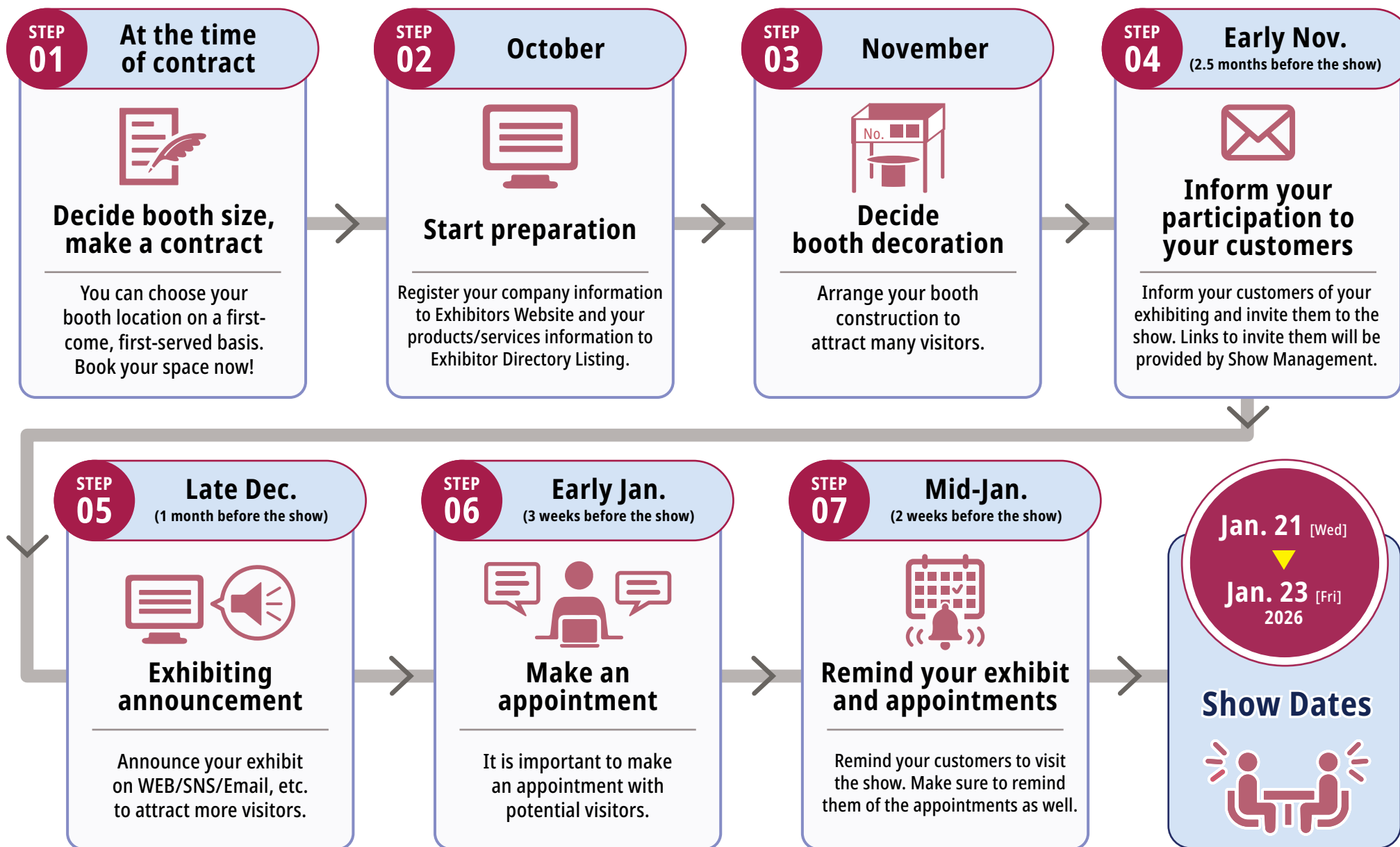
## ◆ Major visitors shall be from Western Japan

Visitors mainly gather from Western Japan



\*The Chart data is from Manufacturing World Osaka show 2022  
Visitor breakdown by region at another show (Manufacturing World Osaka 2022) which has also Tokyo, Nagoya and Osaka shows.

# Schedule until the Show <Sample of Jan. Show Showcase>



# How to Join as an Exhibitor

1

Please **contact Show Management** with your product information and your preferable exhibit space size.

2

Show Management will **offer available spaces** in the most suitable exhibit area for your products.

3

Please **choose your preferable location** and submit the space contract form.

**Please see below for the cost information and the Advertisement Opportunities.**



Participation Cost



Advertisement Opportunities



Contract



**If you have any questions,  
please feel free to contact us.**

► Contact

Organiser: RX Japan Ltd.

NEPCON JAPAN Show Management

11F Tokyo Midtown Yaesu, 2-2-1 Yaesu, Chuo-ku, Tokyo 104-0028, Japan TEL: +81-3-6739-4102

E-mail: [inw.jp@rxglobal.com](mailto:inw.jp@rxglobal.com) Web: [www.nepconjapan.jp/hub/en-gb.html](http://www.nepconjapan.jp/hub/en-gb.html) A division of Reed Business Registered in England, Number 678540